

FABRICS


LEGEND:

 fire retardant(cigarette)

 easy to clean

 natural fibers

 resistance to hydrolysis

 breathable

 reach compliant

 advanced fabrics

PAD

**texture detail*

FABRIC CATEGORY

COMPOSITION

MARTINDALE

D1

28% acrylic + 56% cotton + 4% linen + 12% polyester

40 000









PAD-01 PADOVA FOG



PAD-02 PADOVA SAFIRA



PAD-03 PADOVA ORANGE



PAD-04 PADOVA CAPPUCCINO



PAD-05 PADOVA STONE



PAD-06 PADOVA BEIGE



PAD-07 PADOVA CREAM



PAD-08 PADOVA SAND

TRE

**texture detail*

FABRIC CATEGORY


COMPOSITION

MARTINDALE

D1

28% acrylic + 56% cotton + 4% linen + 12% polyester

40 000









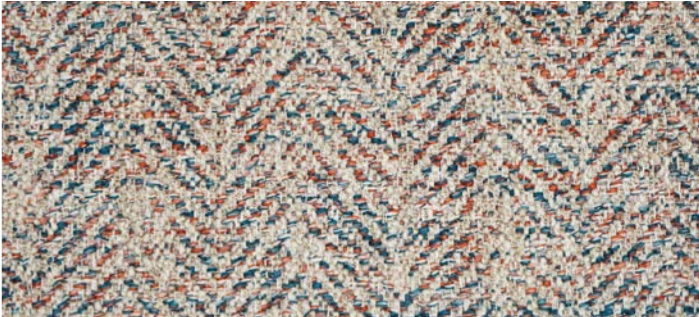
TRE-01 TREVISO ASH



TRE-02 TREVISO BLUE



TRE-03 TREVISO STONE



TRE-04 TREVISO FUSION



TRE-05 TREVISO CAPPUCCINO



TRE-06 TREVISO BEIGE



TRE-07 TREVISO CEMENT

BAB

**texture detail*

FABRIC CATEGORY

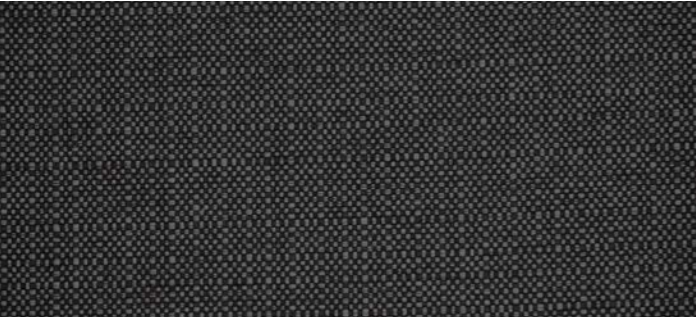
COMPOSITION

MARTINDALE

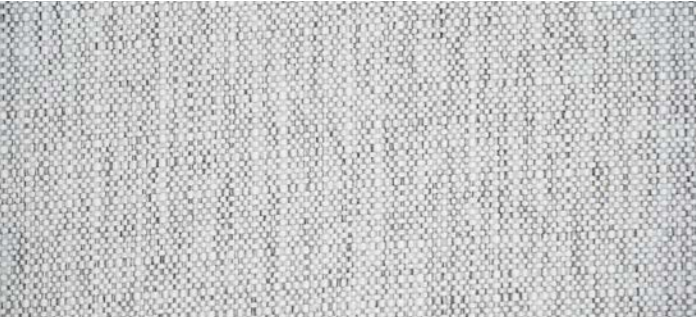
B2

100% polyester

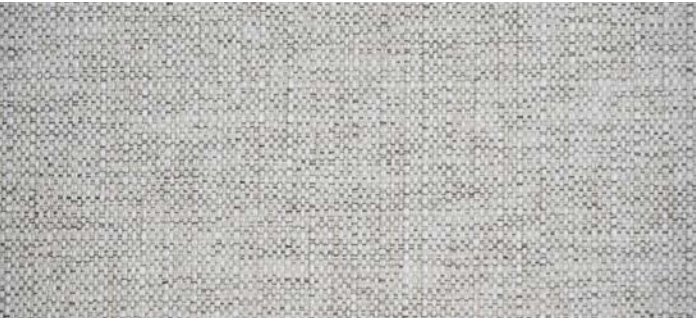
90 000



BAB-02 BLACK



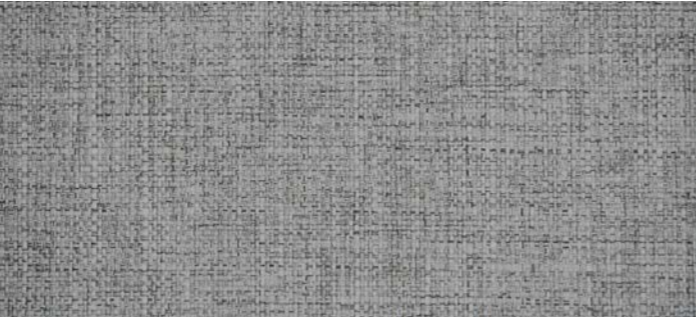
BAB-04 LIGHT GREY



BAB-06 SAND



BAB-08 TAUPE



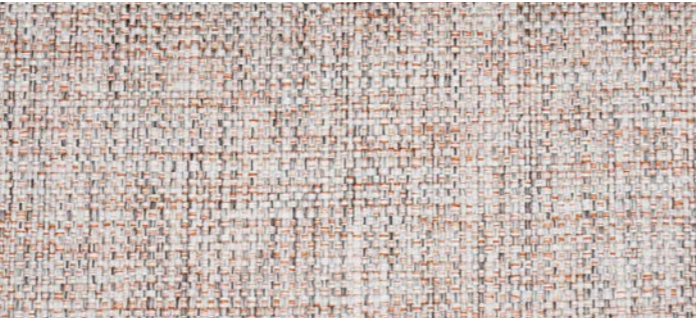
BAB-03 ASH



BAB-05 WHITE



BAB-07 MOUSE



BAB-12 BABEL SALMON

SO

**texture detail*

FABRIC CATEGORY

COMPOSITION

MARTINDALE

B1

100% pu

90 000



SO-02 SOHO 903



SO-05 SOHO 501



SO-09 SOHO 803



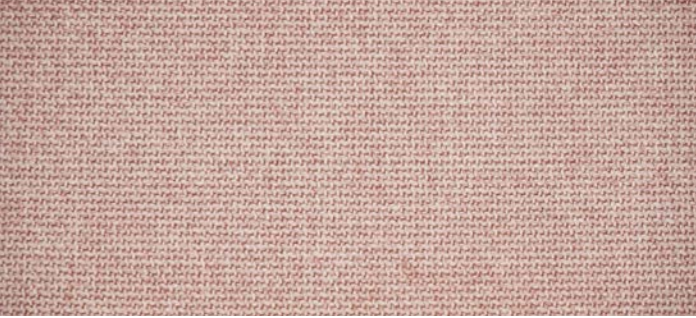
SO-13 SOHO 502



SO-03 SOHO 902



SO-08 SOHO 801



SO-01 SOHO 700

BOS

**texture detail*

FABRIC CATEGORY

COMPOSITION

MARTINDALE

B1

100% polyester

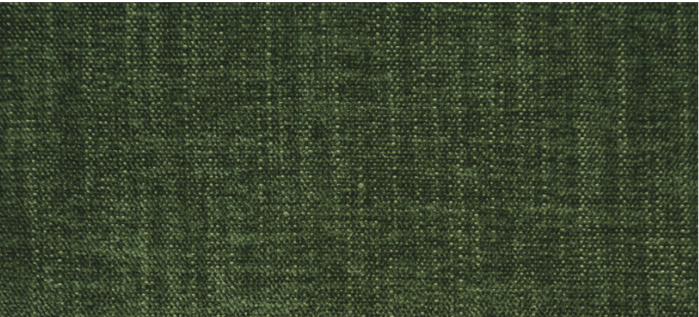
80 000

REACH COMPLIANT

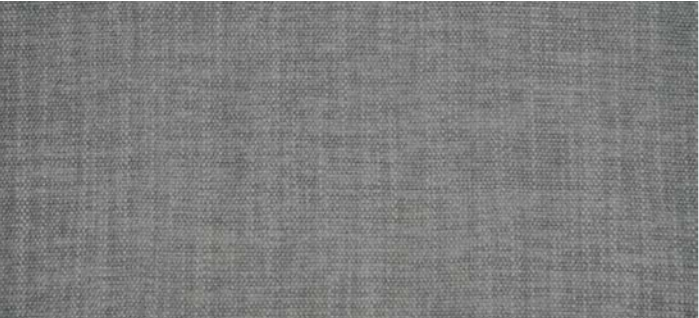
ADVANCED FABRIC



BOS-01 MOSTAZA



BOS-04 FOREST



BOS-08 ASH



BOS-15 BOSTON PINK



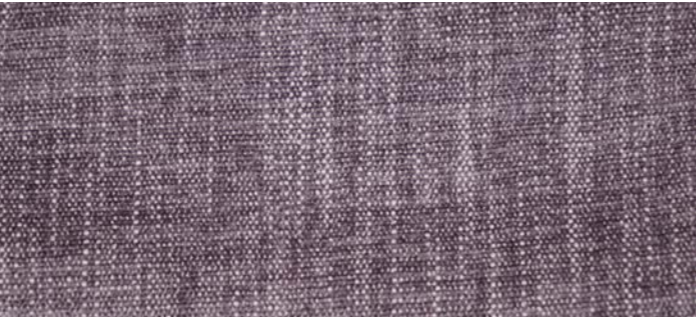
BOS-03 TOFFEE



BOS-07 WATER GREEN



BOS-09 MOUSE



BOS-16 BOSTON LAVANDA

LINEN

**texture detail*

FABRIC CATEGORY

COMPOSITION

MARTINDALE

C2 (FL-50 en FL-26) B1 (FL-34)

(FL-05) 45% linen + 55% cotton

(FL-26 en FL-50) 100% linen

20 000



FL-05 SALT&PEPPER



FL-34 WHITE



FL-26 NATURAL THICK



FL-50 THICK

RDQ

*texture detail

*available in EU only

FABRIC CATEGORY

COMPOSITION

MARTINDALE

E

30% viscose + 30% cotton + 20% linen + 20% polyester

70 000

REACH COMPLIANT



RD-01 17752-42



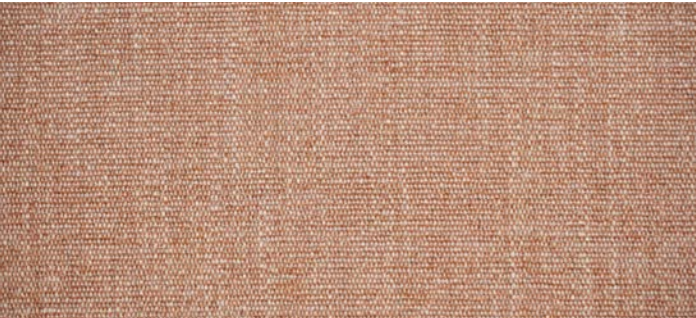
RD-02 17752-32



RD-03 17752-29



RD-04 17752-27



RD-05 17752-101



RD-06 17752-100

BAL

*texture detail

FABRIC CATEGORY

COMPOSITION

MARTINDALE

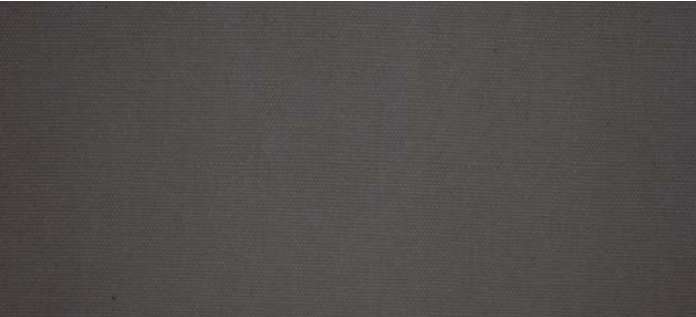
B1

70% cotton + 30% polyester

20 000

REACH COMPLIANT

ADVANCED FABRIC



BAL-02 ELEPHANT



BAL-03 SAND



BAL-04 FOREST



BAL-05 SKY



BAL-06 OCEAN

IB

(outdoor use)

**texture detail*

FABRIC CATEGORY

COMPOSITION

MARTINDALE

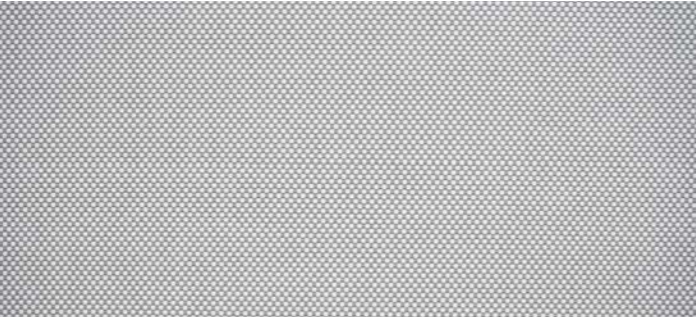
C1

100% polypropylene

50 000

REACH COMPLIANT

ADVANCED FABRIC



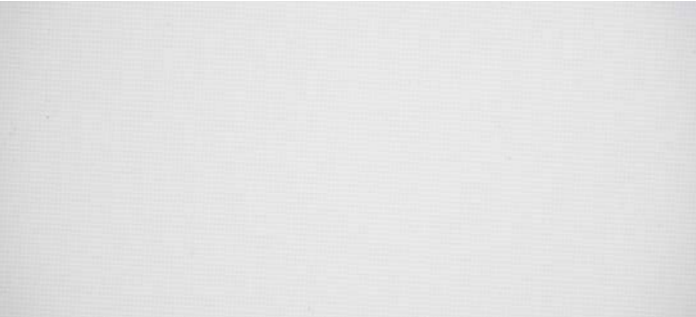
IB-01 CEMENT (OUTDOOR)



IB-02 OCEAN (OUTDOOR)



IB-03 SAND (OUTDOOR)



IB-04 IBIZA WHITE (OUTDOOR)

CAM

**texture detail*

**available in EU only*

FABRIC CATEGORY

COMPOSITION

MARTINDALE

C2

95% polyester recycled + 5% cotton recycled

60 000

REACH COMPLIANT

ADVANCED FABRIC



CAM-01 CAMEL G1101-370611



CAM-02 CAMEL G1916-370602



CAM-03 CAMEL G1101-370613



CAM-04 CAMEL G1916-370605

DAN

**texture detail*

FABRIC CATEGORY

COMPOSITION

MARTINDALE

C2

90% polyester + 10% rayon

40 000

REACH COMPLIANT

ADVANCED FABRIC



DAN-08 BLACK



DAN-04 CREAM



DAN-05 WATER GREEN

BD

**texture detail*

FABRIC CATEGORY

COMPOSITION

MARTINDALE

C2

84% polyester + 16% nylon

90 000

REACH COMPLIANT

ADVANCED FABRIC



BD-02 BERMUDA 900



BD-28 BERMUDA 901

CM

**texture detail*

FABRIC CATEGORY

COMPOSITION

MARTINDALE

C1

50% polyester + 82 % viscose + 12% linnen + 10 % cotton

45 000

REACH COMPLIANT

ADVANCED FABRIC



CM-11 CAMARGUE 502



CM-25 CAMARGUE 806



CM-27 CAMARGUE 900



CM-28 CAMARGUE 902

ACT

(bouclé)

**texture detail*

FABRIC CATEGORY

COMPOSITION

MARTINDALE

C2

95% polyester + 5% acrylic

80 000

REACH COMPLIANT

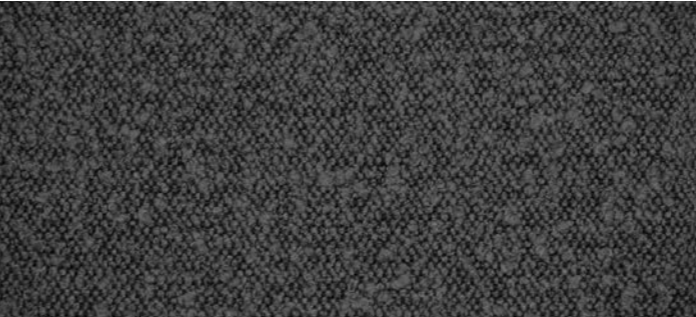
ADVANCED FABRIC



ACT-02 PEARL



ACT-03 TOFFEE



ACT-04 GRAPHITE

SYM

**texture detail*

FABRIC CATEGORY

COMPOSITION

MARTINDALE

C1

100% polyester recycled

100 000

REACH COMPLIANT

ADVANCED FABRIC



SYM-001 COPENHAGEN 908

HIM

*texture detail

FABRIC CATEGORY

COMPOSITION

MARTINDALE

C1

100% polyester recycled

100 000



HIM-01 HIMALAYA 904



HIM-04 HIMALAYA 502



HIM-05 HIMALAYA 303



HIM-06 HIMALAYA 304

ADO

*texture detail

FABRIC CATEGORY

COMPOSITION

MARTINDALE

C1

100% polyester

90 000



ADO-10 MACAU SAND



ADO-56 MACAU PETROL



ADO-102 MACAU PEARL



ADO-126 MACAU BRICK/TERRA



ADO-132 MACAU CU010



ADO-156 MACAU FOREST



ADO-158 MACAU EMERALD



ADO-166 MACAU CORAL



ADO-82 MACAU CEMENT

QZ

**texture detail*

FABRIC CATEGORY

COMPOSITION

MARTINDALE

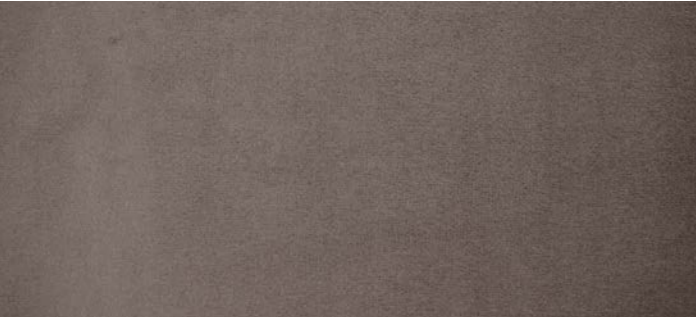
B1

100% polyester

90 000

REACH COMPLIANT

ADVANCED FABRIC



QZ-01 QUARTZ 101



QZ-02 QUARTZ 607



QZ-03 QUARTZ 606



QZ-04 QUARTZ 700



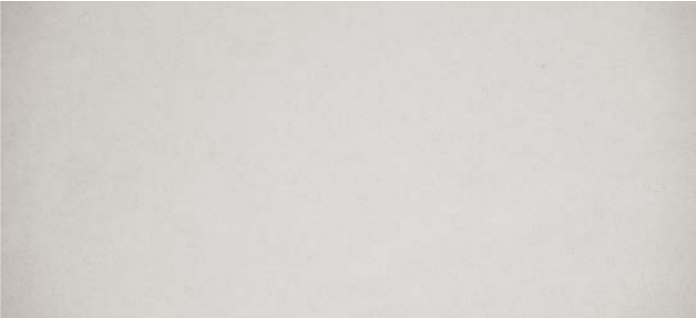
QZ-13 QUARTZ 600



QZ-14 QUARTZ 701



QZ-28 QUARTZ 28



QZ-43 QUARTZ 808

BER

**texture detail*

FABRIC CATEGORY

COMPOSITION

MARTINDALE

B2

100% polyester recycled

100 000

REACH COMPLIANT

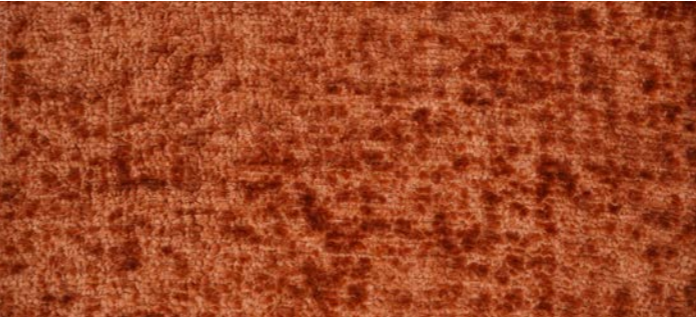
ADVANCED FABRIC



BER-01 BERGEN 900



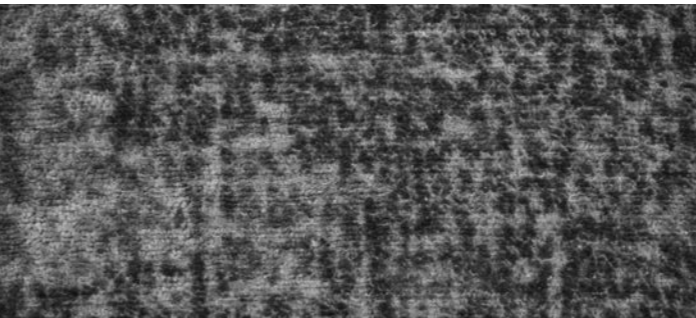
BER-02 BERGEN 404



BER-03 BERGEN 303



BER-04 BERGEN 503



BER-05 BERGEN 801



BER-09 BERGEN 902



BER-10 BERGEN 705

PEK

*texture detail

*available in EU only

FABRIC CATEGORY

COMPOSITION

MARTINDALE

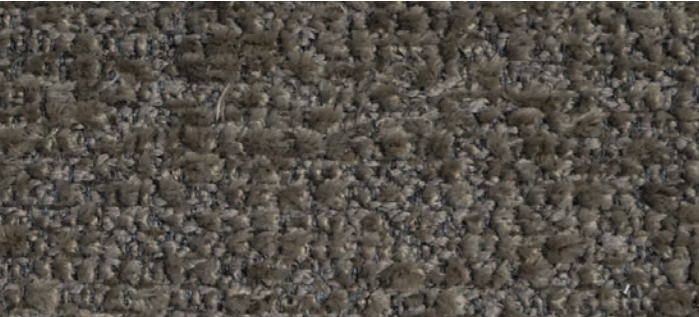
E

100% polyester recycled

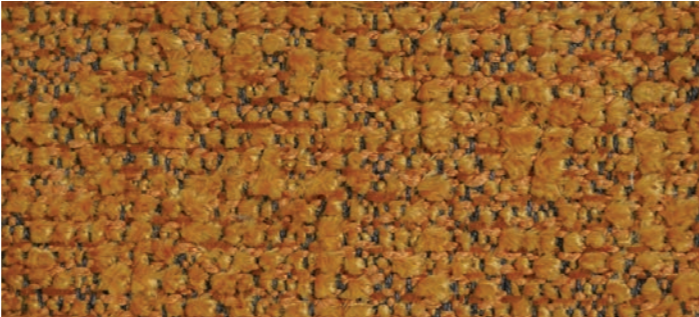
100 000

REACH COMPLIANT

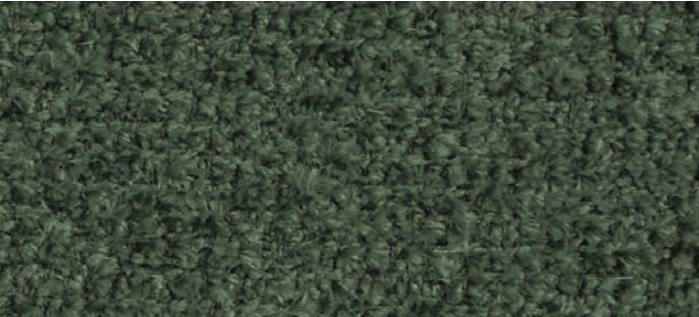
ADVANCED FABRIC



PEK-01 PECKIE G1916-367148



PEK-0 PECKIE G1916-367151



PEK-03 PECKIE G1916-367153



PEK-04 PECKIE G1000-367142

MO

*texture detail

FABRIC CATEGORY

COMPOSITION

MARTINDALE

D1

100% polyester

100 000

REACH COMPLIANT

ADVANCED FABRIC



MO-01 SHEEPSKIN NATURAL



MO-04 SHEEPSKIN BLUSH



MO-05 SHEEPSKIN OLIVE

CR

*texture detail

*available in EU only

FABRIC CATEGORY

COMPOSITION

MARTINDALE

E

50% polyester + 22% viscose 11% linen

100 000

REACH COMPLIANT

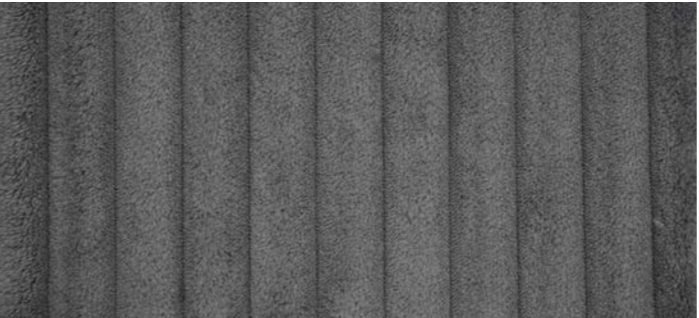
ADVANCED FABRIC



CR-01 M-IVORY



CR-02 M-BEACH



CR-03 M-GUNMETAL

AC

*texture detail

*available in EU only

FABRIC CATEGORY


COMPOSITION

MARTINDALE

D2

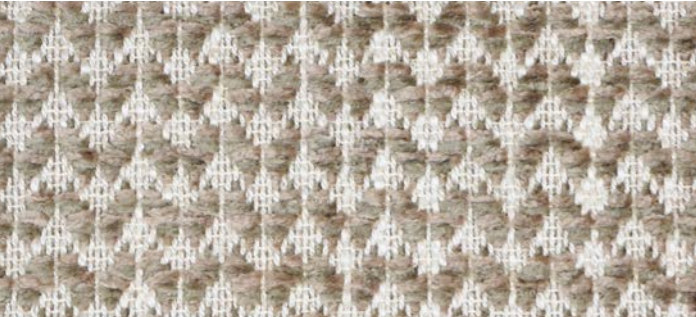
50% polyester + 22% viscose + 11% linen

40 000





AC-02 ACASIA 140 193004



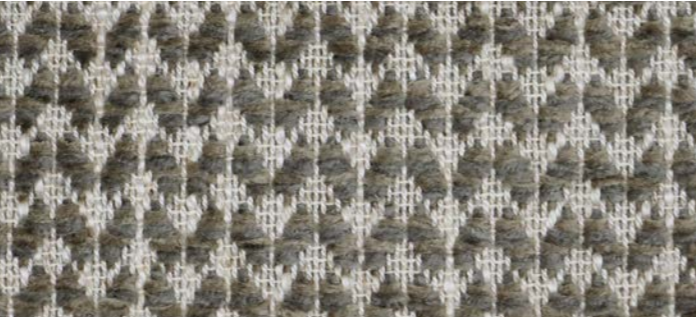
AC-04 ACASIA 140 193002



AC-06 ACASIA PLAIN 140 193016



AC-08 ACASIA PLAIN 140 193009



AC-03 ACASIA 140 193003



AC-05 ACASIA 140 193001



AC-07 ACASIA 140 193012



AC-09 ACASIA PLAIN 140 193003

SAN

(outdoor)

*texture detail

FABRIC CATEGORY

COMPOSITION

MARTINDALE

D1

100% recycled yarn

25 000





SAN-01 SANTORINI OCEAN (OUTDOOR)



SAN-02 SANTORINI BRICK (OUTDOOR)



SAN-03 SANTORINI MOUSE (OUTDOOR)

BE

**texture detail*

FABRIC CATEGORY

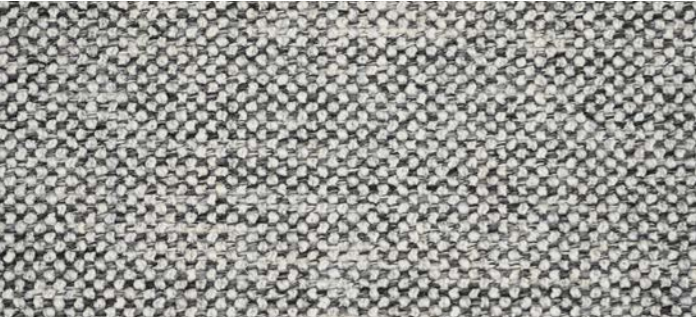
COMPOSITION

MARTINDALE

D1

28% acrylic + 56% cotton + 4% linen + 12% polyester

40 000



BE-01 BERGAMO ASH



BE-02 BERGAMO BEIGE



BE-03 BERGAMO CREAM

EV

**texture detail*

FABRIC CATEGORY

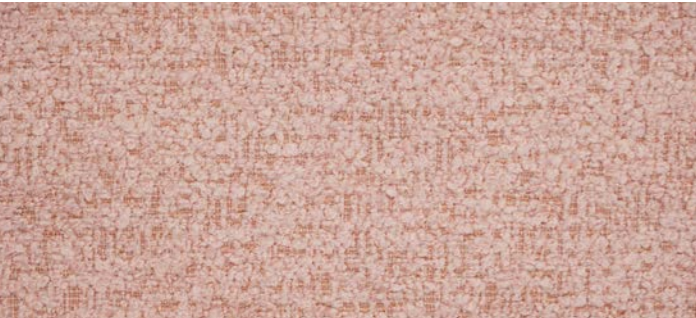
COMPOSITION

MARTINDALE

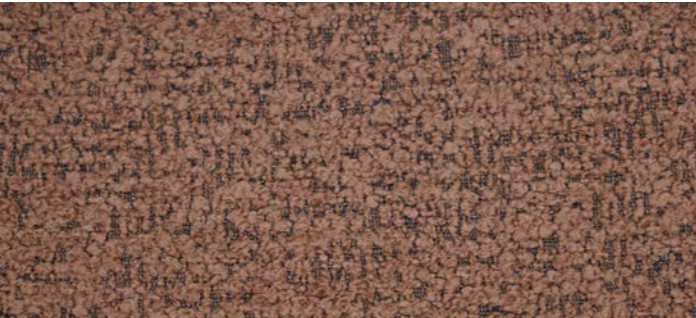
C1

100% polyester

100 000



EV-01 EVEREST 701



EV-02 EVEREST 101



EV-03 EVEREST900



EV-04 EVEREST902

PH

**texture detail*

FABRIC CATEGORY

COMPOSITION

MARTINDALE

B2

100% polyester

81 000



PH-01 PHAT SAND



PH-02 PHAT CREAM



PH-03 PHAT MICA




PH-04 PHAT PEWTER





LEGEND:


 fire retardant(cigarette)


 easy to clean





 natural fibers

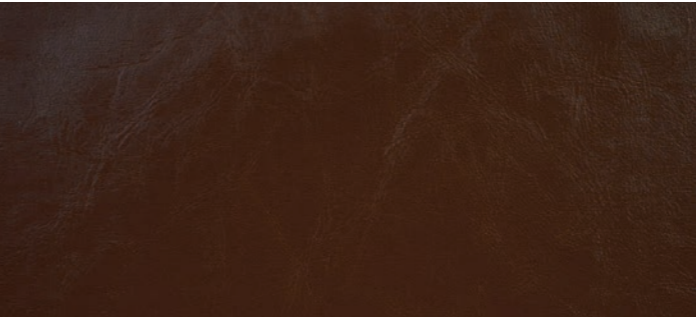
 resistance to hydrolysis

 breathable

 reach compliant





 advanced fabrics

PT <i>*texture detail</i>	FABRIC CATEGORY	C2	   
	COMPOSITION	50% polyurethane + 50% polyester	
	MARTINDALE	35 000	



PT-19 TOBACCO

ECO-LEATHER OPTIONS

DAL <i>*texture detail</i>	FABRIC CATEGORY	C2	   
	COMPOSITION	70% regenerated leather + 30% polyester	
	MARTINDALE	40 000	



DAL-02 CUOICO

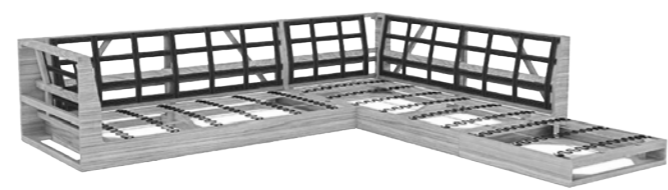
SOFAS TECHNICAL INFORMATIONS

At PR-Living we build all our custom pieces by hand using the best possible materials and to heighest standards.

SOFA CONSTRUCTION

FRAME

We make our frames with solid wood that provides for exceptionally sturdy, long-lasting furniture pieces. We use engineered timber to further reinforce the hardwood frame on the sides and back. We join our frames with corner blocks, heavy-duty staples, and industrial-strength glue. All frames have a 5 year limited frame warranty.



SUSPENSION

The seating of the frame is constructed with sinuous steel springs that are securely fastened and provide long-lasting support and comfort. The back of the frame is constructed with synthetic webbing that offers soft and supportive comfort.



CUSHIONS

We produce all of our seat cushions with a high-quality, high-resilience foam core. On some of our designs, the high-resiliency foam is wrapped in fiber and placed in a channeled cotton casing with a blend of feathers, down and fibers. Over time, all foam and filling will soften depending on the usage. Down blend cushions will become softer and will puddle. This is normal and not considered a defect in construction. Since we wrap the sofa in plastic during transportation, you might experience a slight smell. Once the sofa is unwrapped and allowed to “air-out,” the smell will go away after a few days.

CENTER LEG SUPPORT

Don’t be alarmed when you inspect your sofa and notice the center leg support does not touch the ground. As a rule of thumb, the center leg support, located in the middle of the sofa, typically does not touch the ground when no one is on the sofa. It is there for additional support to help even out the weight.

SEATING COMFORT

Our medium-depth sofas keep you vertical, yet relaxed. The dimensions are our most universal, suiting a range of heights and body types.

CARE INSTRUCTIONS

CUSHION CARE

When you receive your new sofa, please be aware that the cushions will need some time to adjust. Cushions are made to fit your sofa, and are packed, shipped, and delivered to you before being sat on. Depending on how often you use your new sofa, it could take a couple of weeks to allow the cushions to break in and soften up fully. We recommend rotating cushions regularly to ensure even wear and thus prolong the life of your sofa. If the cushions are reversible, you should also flip the cushions along with changing their location. Rotation keeps the cover positioned properly on the cushion core. It also evens out the impact of frictional wear and sun exposure on the fabric. Fluffing cushions regularly will help to restore their loft. We recommend to rotate, flip, and fluff loose pillows weekly or biweekly, depending on the amount of use the piece receives.

FABRICS

FABRIC CHARACTERISTICS
Our fabric selection includes a variety of natural and synthetic materials. While we select durable and high-quality materials, slight differences in texture, color, or appearance among fabrics (and leathers) may occur between production runs. This is normal and not considered a defect. We work closely with our supply chain partners to ensure each production run falls within our approved variance range. Over time exposure to extreme temperature changes and direct sunlight may cause color changes. Fabrics are not guaranteed against wear, fading, or shrinking.

GENERAL FABRIC CARE
We recommend routine vacuuming or light brushing. Use the upholstery attachment tool of your vacuum cleaner to remove loose particles. We recommend to vacuum the sofa at least once or twice a month. This will prevent the build-up of dust , which can damage the fabric over time. Avoid prolonged exposure to direct sunlight, since this can cause fading.

HOW TO SPOT-CLEAN STAINS
Blot spills immediately with a clean, absorbent white cloth. Blot from the outside to the middle of the affected area to prevent rings. Spot cleaning can cause a ring or fading. It is best to have the entire piece or cushion casing cleaned by a professional cleaning service to ensure consistent results.

OVERALL FABRIC AND SLIPCOVERS CLEANING
For thorough cleaning, we recommend using a professional in-home upholstery cleaning service. We suggest annual cleaning, but this can vary depending on usage.

PILLING

Pilling is an inherent characteristic of many high-quality upholstered fabrics and is not a fabric fault or defect. The small pilling pieces must first be allowed to form before they can be removed, so it is a characteristic that cannot be pro-actively resolved. Pilling is caused by natural fiber migration from the yarns to the fabric surface as the fabric is rubbed. When pilling occurs, there is often a concern that the fabric is disintegrating and will leave a worn-out area or not retain the proper structure in the fabric. This is not the case. Pilling will stop once the excess fiber is gone. It is recommended to use a fabric pilling comb to shave off the pills. Rarely does pilling re-occur after utilizing this method.

LEATHERS

Leather is a natural material. Slight differences in texture, color, or appearance from hide to hide may occur. Leather is particularly subject to variations in color and markings, such as wrinkles, stretch marks, and healed scars may show. Also, no piece of furniture can be produced from a single hide. These characteristics make leather unique and are not considered defective. Natural color changes, exposure to extreme temperature changes, and direct sunlight may cause color changes and/or surface damage. Over time, leather will naturally develop a patina and a softer, more supple feel, adding comfort and character.

GENERAL LEATHER CARE
Minor scratches such as fingernail scratches or light scuffs may cause a slight mark without truly damaging the leather. Start by using your fingers to gently buff minor scratches or scuffs on the surface.

FURNITURE

WOOD CARE
Dust your tabletop regularly with a soft dry cloth. To remove food debris and dirt, wipe with a damp cloth and then dry. Do not use an abrasive cleaner. Protect your tabletop from liquids, heat, direct sunlight, and abrasives. Do not leave spills unattended, and use surface pad beneath heated dishes. Use a cutting board and coasters to minimize scratches on your tabletop. Note that wood finishes may still darken with time and exposure to the elements. Maintain wax as needed, using a natural beeswax or paste wax free of paint thinners. Hardware may loosen with use. Periodically check to make sure all connections are tight.

CONTACT

EUROPEAN SALES & HEAD OFFICE

Vijfseweg 84
8790 Waregem
BELGIUM

T +32 56 62 51 90
info@pr-living.be
www.pr-living.com

PR-LIVING ASIA

Changle Road, Lane 672, No. 33
Jingan District
Shanghai
CHINA

T +86 (0)21 5228 9251
info@pr-living.com
www.pr-living.com

PR-LIVING MEXICO

mexico@pr-living.com
www.pr-living.com

CONTENTS

INTRO

pp. 01–13

INDEX

pp. 14–15

SOFAS

pp. 16–113

POUFS & STOOLS

pp. 114–121

CLUBCHAIRS

pp. 122–151

BEDS

pp. 152–161

FABRICS

pp. 162–181

LEATHERS

pp. 182–189

SOFAS TECHNICAL INFO.

pp. 190–193

CONTACT

pp. 194



BELGIUM 1960

WWW.PR-LIVING.COM